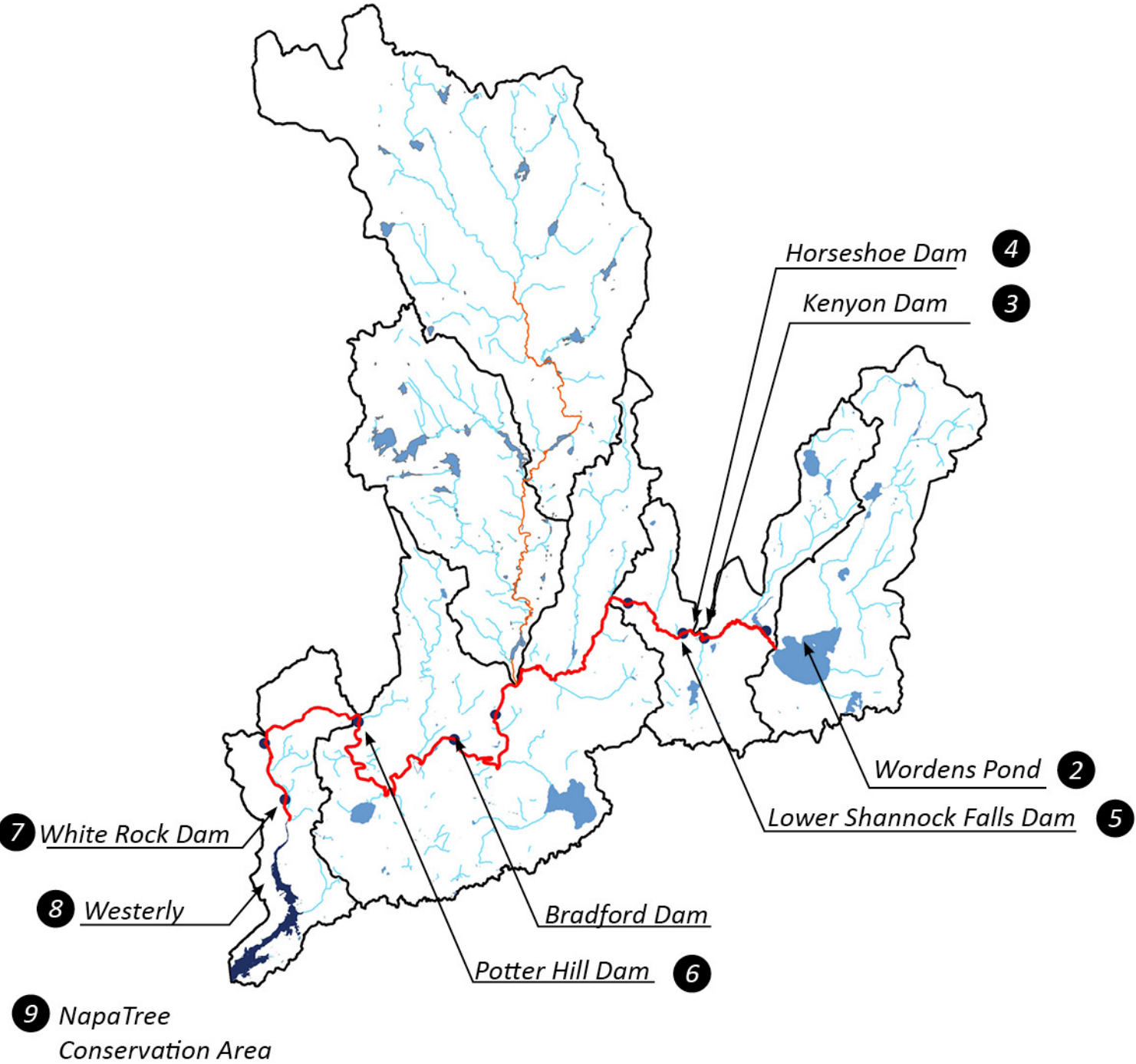


THURSDAY'S ITINERARY

1 URI



Horseshoe Dam 4

Kenyon Dam 3

Wordens Pond 2

Lower Shannock Falls Dam 5

Bradford Dam

Potter Hill Dam 6

7 White Rock Dam

8 Westerly

9 NapaTree Conservation Area



Figure 13 - The Potter Hill Dam in the March 2010 500 year Historic Flood (Flood Photographs Gallery, 2010)



POTTER'S HILL DAM.—Before Coffey Dam was built.

Figure 6 - The river conditions after dam failure at Potter Hill on Sunday March 1, 1903 (Commission of Dams and Reservoirs , 1904)



POTTER'S HILL DAM.—Dam and Waste Gate, looking up stream.

Figure 9 - 1903 completed construction of Potter Hill Dam (Commission of Dams and Reservoirs , 1904)



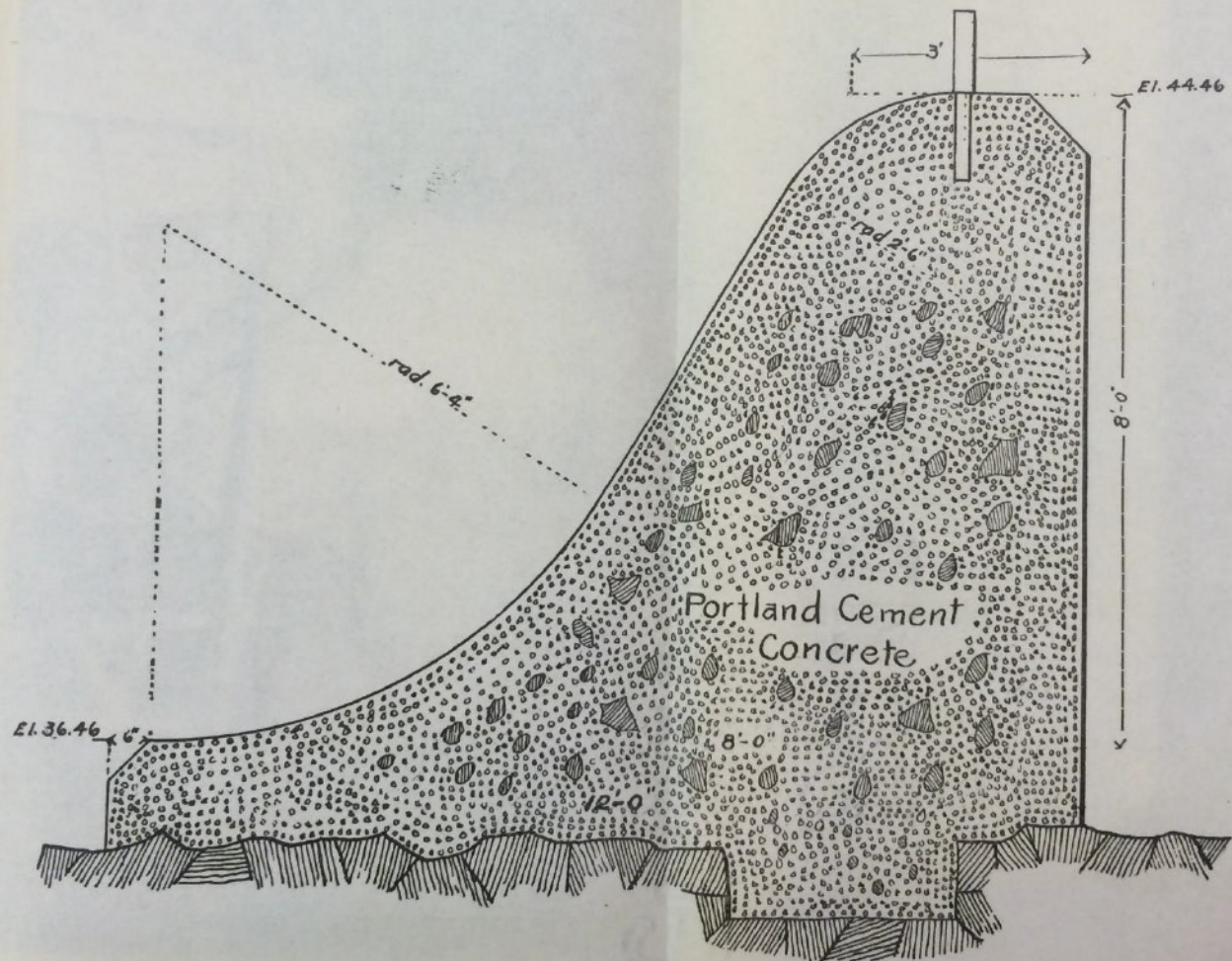
Figure 10 - Potter Hill Dam Postcard (Pre-1970)



POTTER'S HILL DAM.—During construction of Waste Gate Abutment.

Figure 7 - 1903 construction of the Potter Hill Dam (Commission of Dams and Reservoirs , 1904)

PLATE 455.



SECTION.

Dam at Potter's Hill, Westerly.

Figure 36 - 1904 Spillway Drawing of Potter Hill Dam

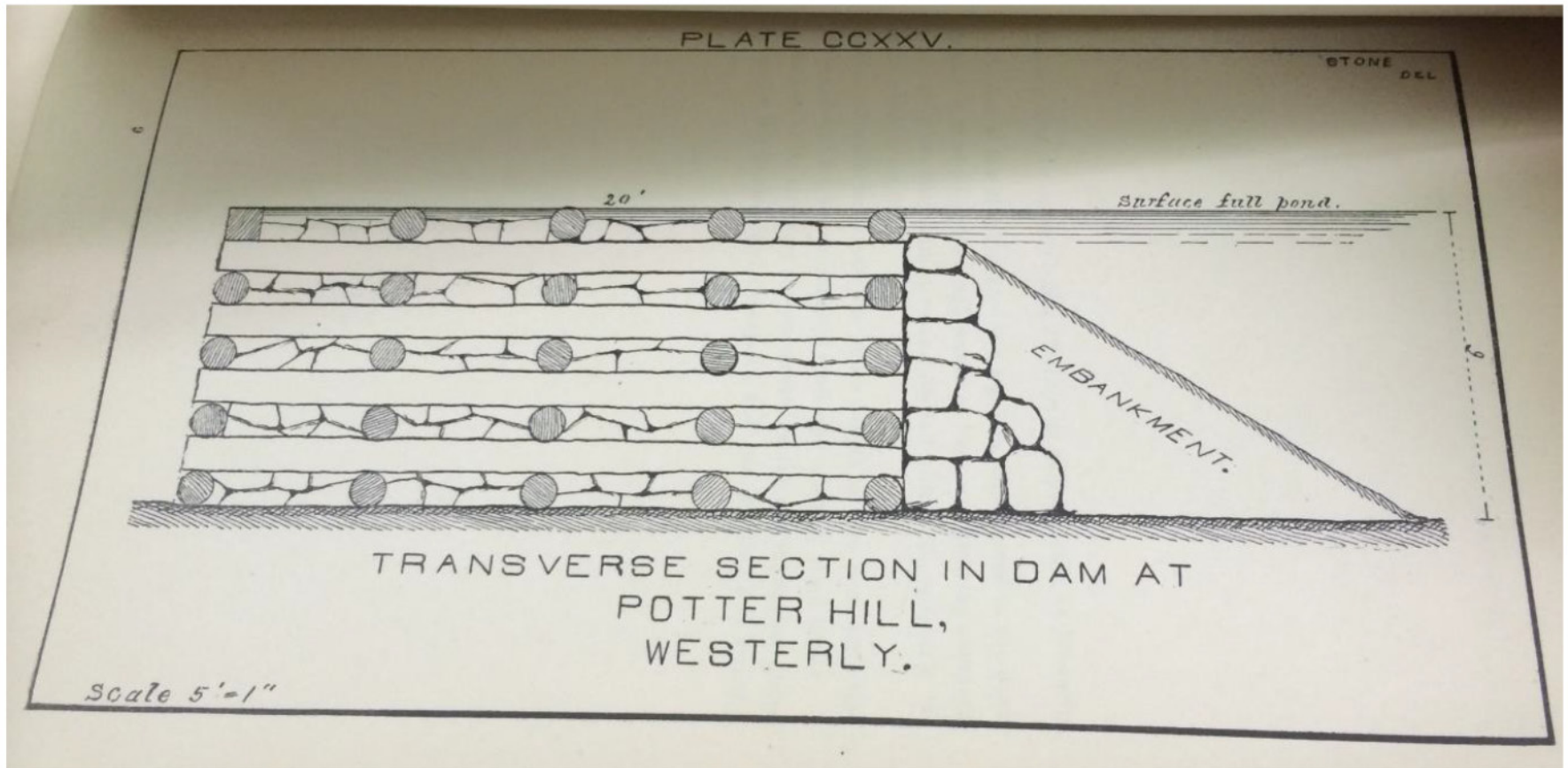
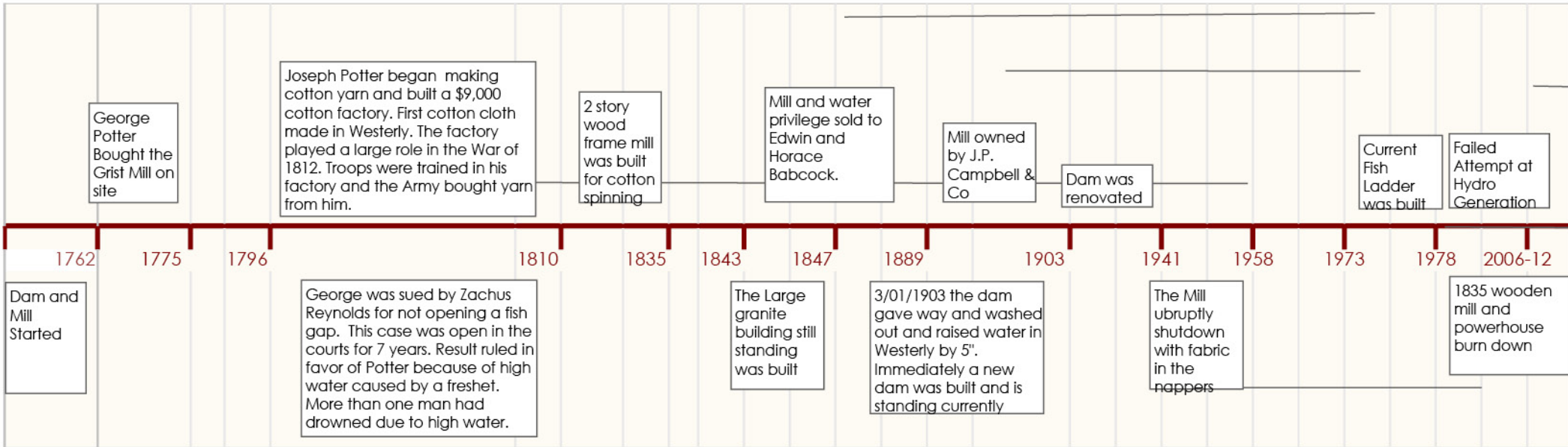


Figure 5 - Cross Section view west to east of the dam previous to 1903 (Commission of Dams and Reservoirs , 1904)





POTTER HILL



Original Dam 1762
Failed in 1903
Rebuilt in 1907
Classified as "Low Risk"

WHITE ROCK DAM - VIDEO

<http://www.nature.org/photos-and-video/video/time-lapse-removal-of-white-rock-damhcst>

WHITE ROCK DAM



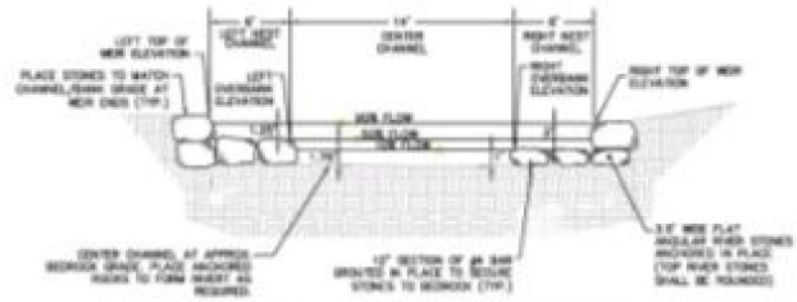
Concrete structure
Removed 2015



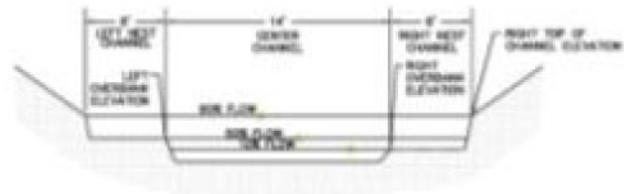
BRADFORD MILL DAM



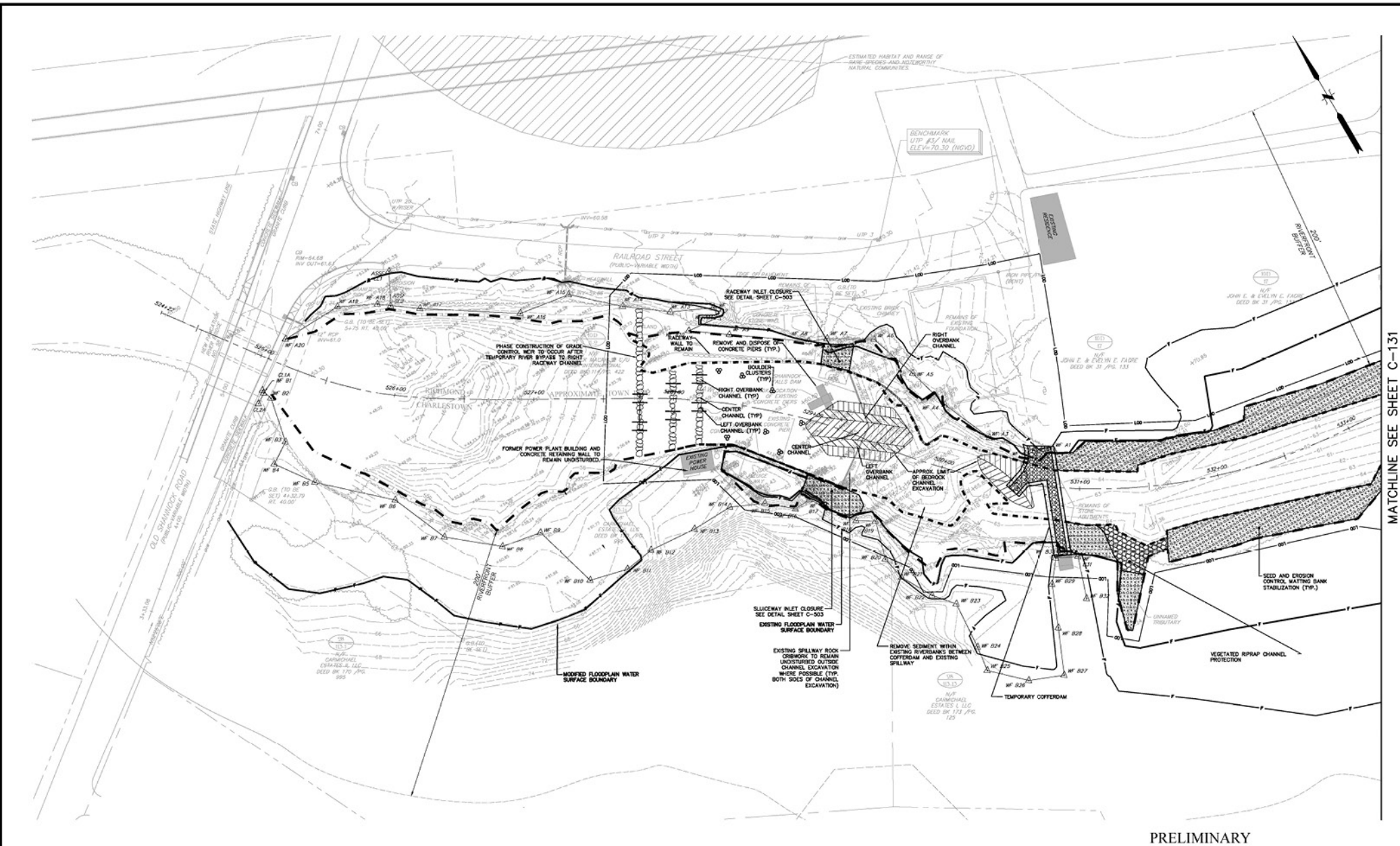
Existing Fish Ladder
Possibility for removal



TYPICAL GRADE CONTROL WEIR SECTION
NOT TO SCALE



TYPICAL CHANNEL EXCAVATION SECTION
NOT TO SCALE



PRELIMINARY

MATCHLINE SEE SHEET C-131

PROJ. MANAGER	NSW	SEAL	
CHIEF DESIGNER	ASH	SEAL	
REVIEWED BY:	DATE		
PWM	04/09		
1. No. DATE DESCRIPTION BY			
REVISIONS			

SCALE	HORIZ. 1"=30'
	VERT. 1"=10'
DATUM:	HORIZ. NAVD83
	VERT. NGVD
GRAPHIC SCALE	

FUSS & O'NEILL
Disciplines to Deliver

317 IRON HORSE WAY SUITE 204 PROVIDENCE RI 02908 401.861.3070

SHANNOCK FALLS DAM
REMOVAL AND FISH PASSAGE

WOOD-PAWCATUCK WATERSHED ASSOCIATION
IN-STREAM & RIPARIAN HABITAT
IMPROVEMENT PLAN
SHANNOCK VILLAGE RHODE ISLAND

PROJ. No. 20060817.A10	C-130
DATE: JUNE 2009	
8 OF 19	

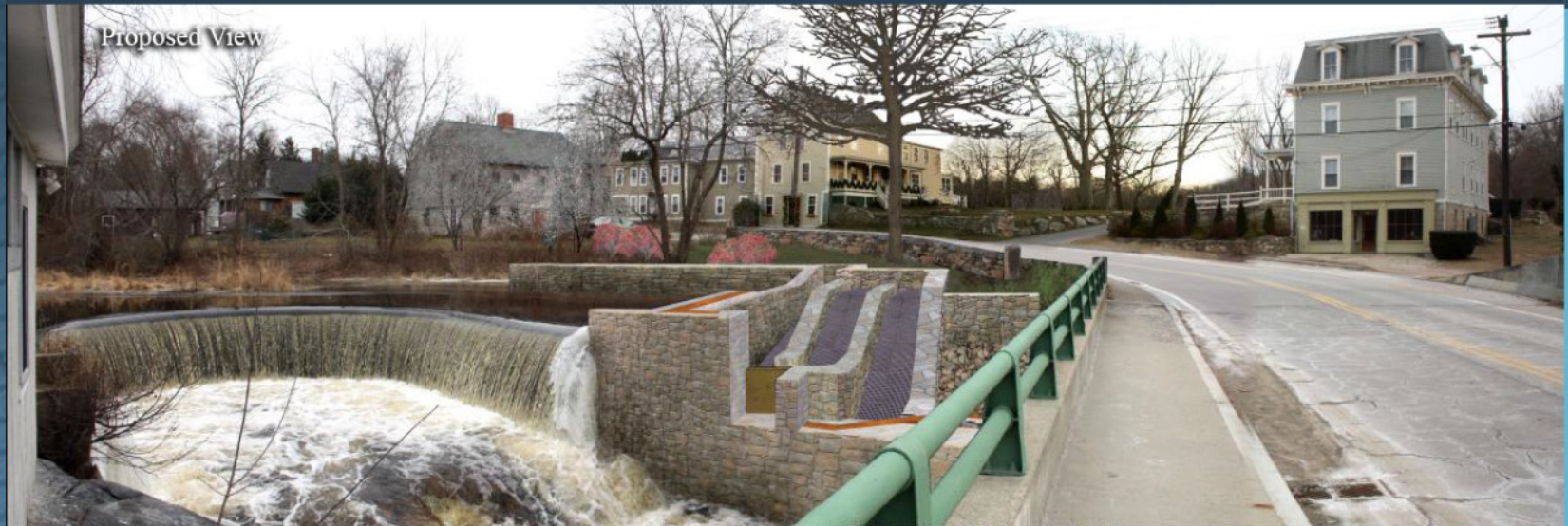
LOWER SHANNOCK FALLS DAM



Run-of-the-river dam
7-ft height (4-ft high structure on bedrock)
Removed dam in 2010

Final Design and Construction Sequence

Horseshoe Falls Dam Fish Passage

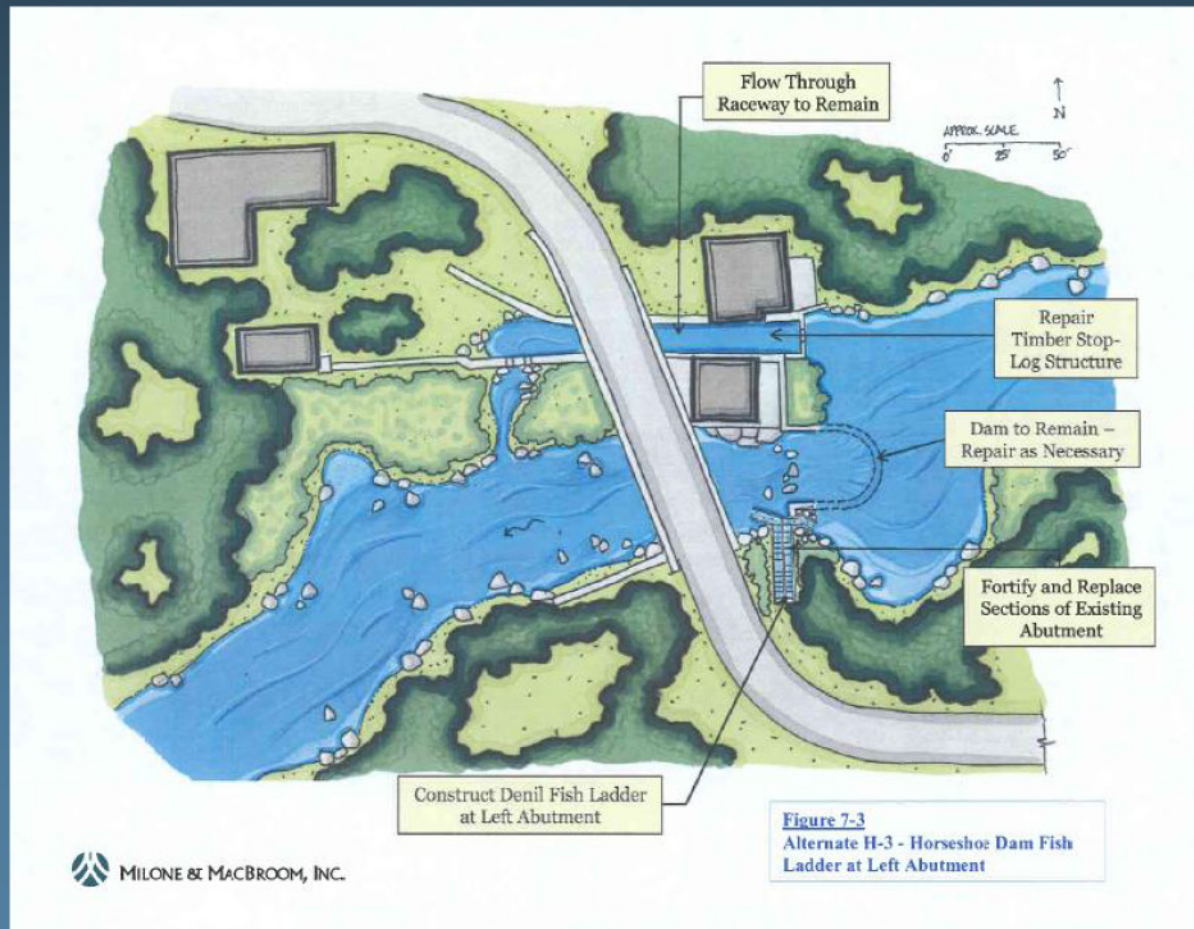


Conceptual View Across Channel
WPWA Horseshoe Falls Dam Fish Ladder

2007 Feasibility Study Alternatives Evaluation

Horseshoe Falls Dam Fish Passage

Fish Ladder At Left Abutment

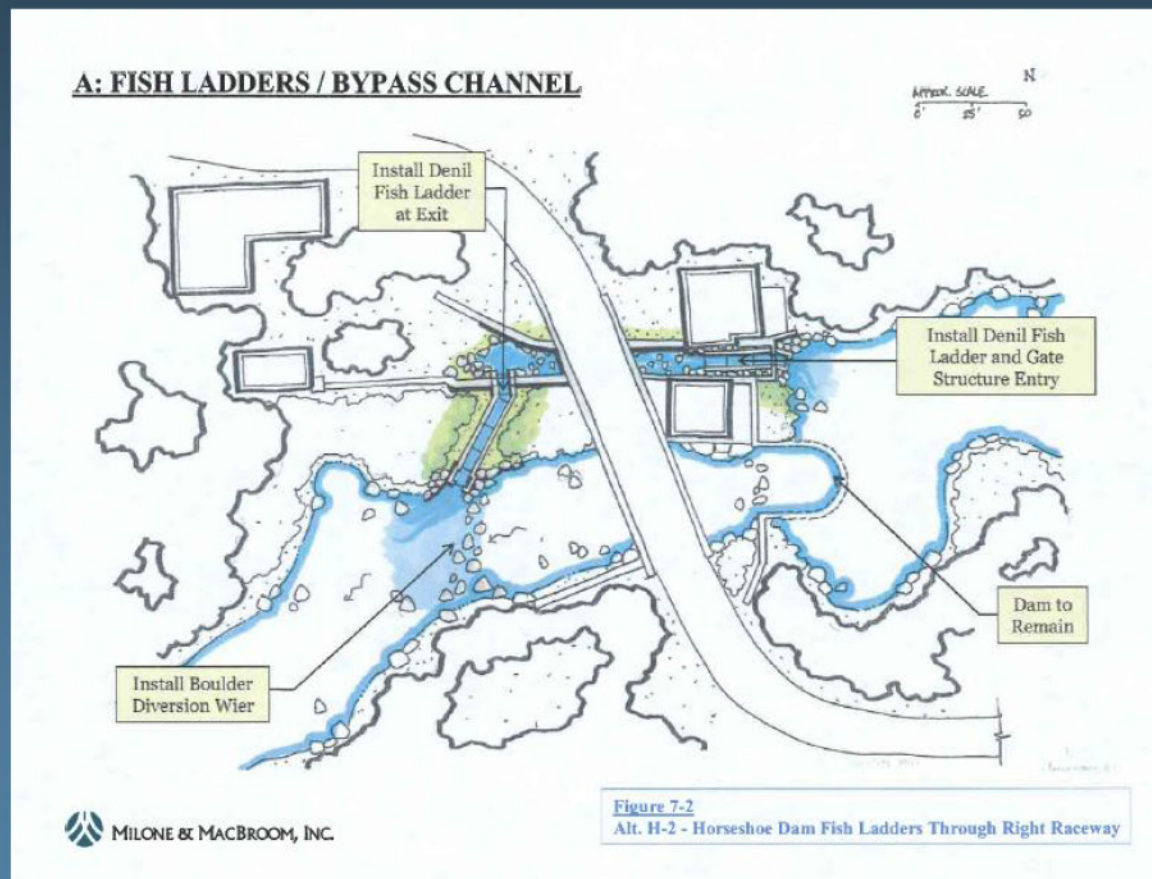


Source: August 2007

Malone and MacBroom Feasibility Study

2007 Feasibility Study Alternatives Evaluation Lower Shannock Falls Dam Removal and Fish Passage

Fish Ladder Through Right Raceway



Source: August 2007

Malone and MacBroom Feasibility Study

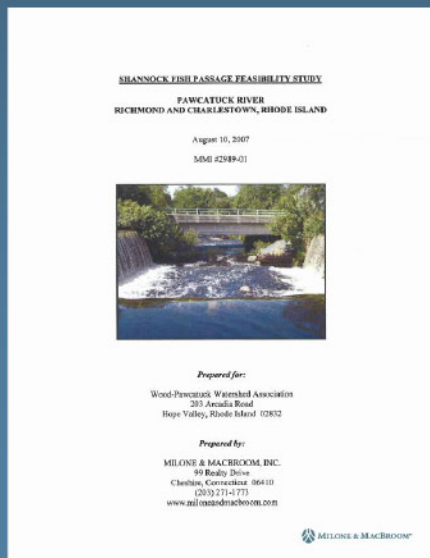
2007 Feasibility Study Alternatives Evaluation

Horseshoe Falls Dam Fish Passage

Feasibility Study Alternatives

TABLE 5-1
Summary of Alternatives Considered

<i>Upper Shannock Horseshoe Falls Dam</i>	
H-1	No Action
H-2a	High Gradient Riffles at Right Raceway
H-2b	Fish Ladders at Raceway
H-3	Fish Ladder at Left Abutment

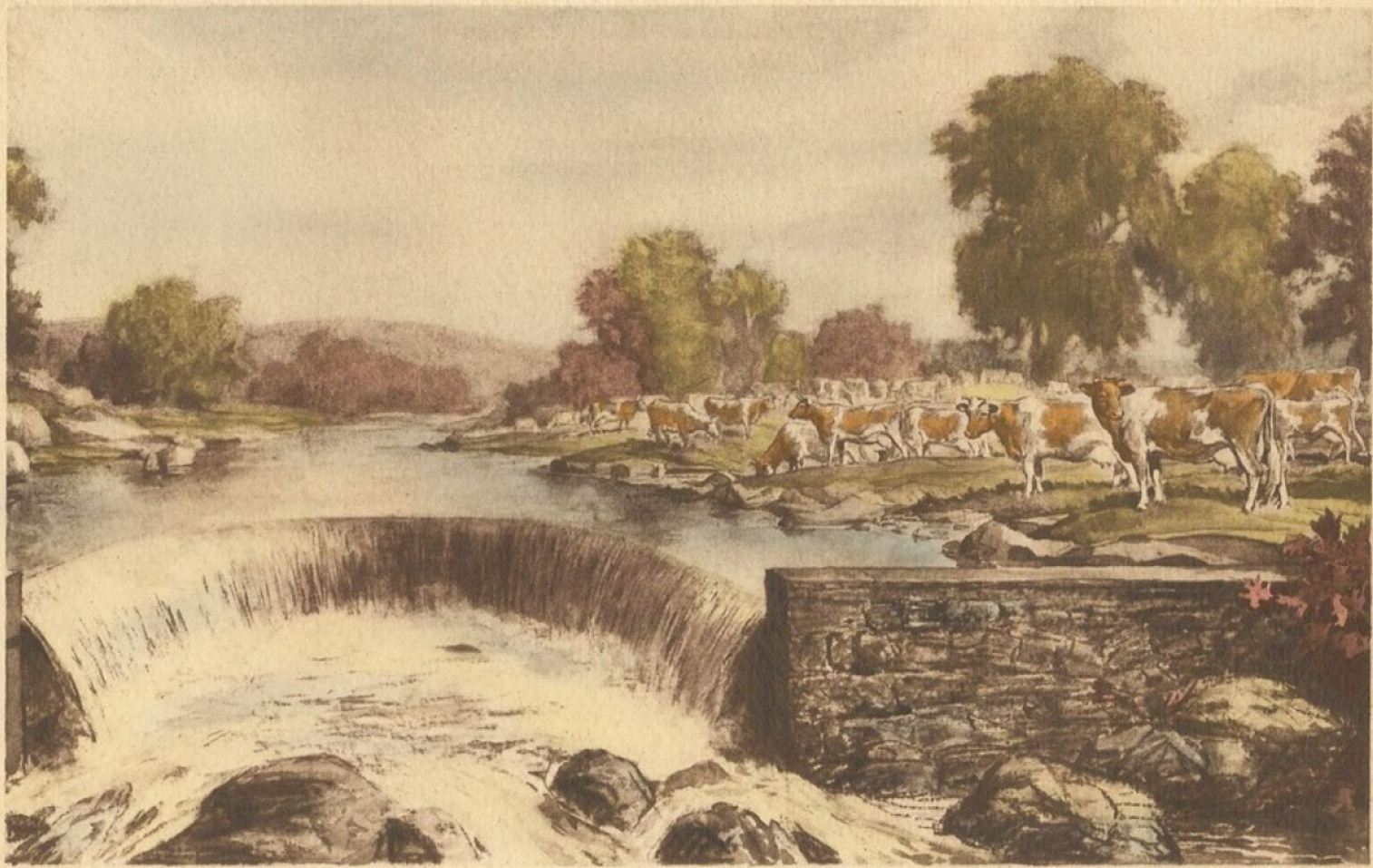


Source: August 2007

Malone and MacBroom Feasibility Study



SMP STEW MILNE
PHOTOGRAPHY



Martin Hansen

HORSESHOE FALLS DAM



Masonry structure

Iconic - Most photographed site in RI

Built Dinil Fish ladder and eel passage in 2012

KENYON MILL DAM



5-foot high timber crib stone and concrete dam
Concern over adjacent wells
Fire suppression safety needs for adjacent industry
Built Nature Like Fish Ladder in 2013





PAWCATUCK

Washington, New London Co. Conn.

WESTERLY

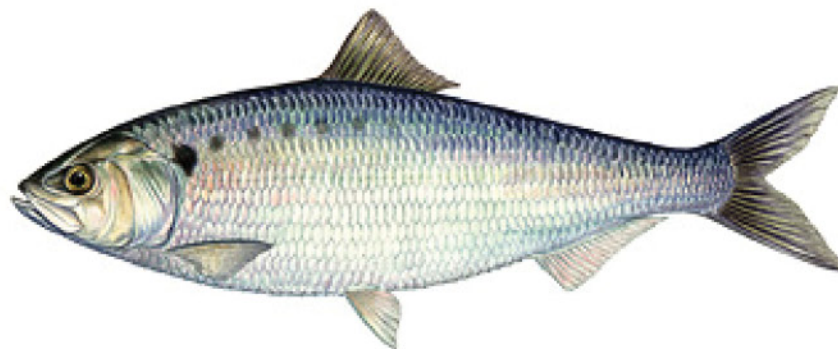
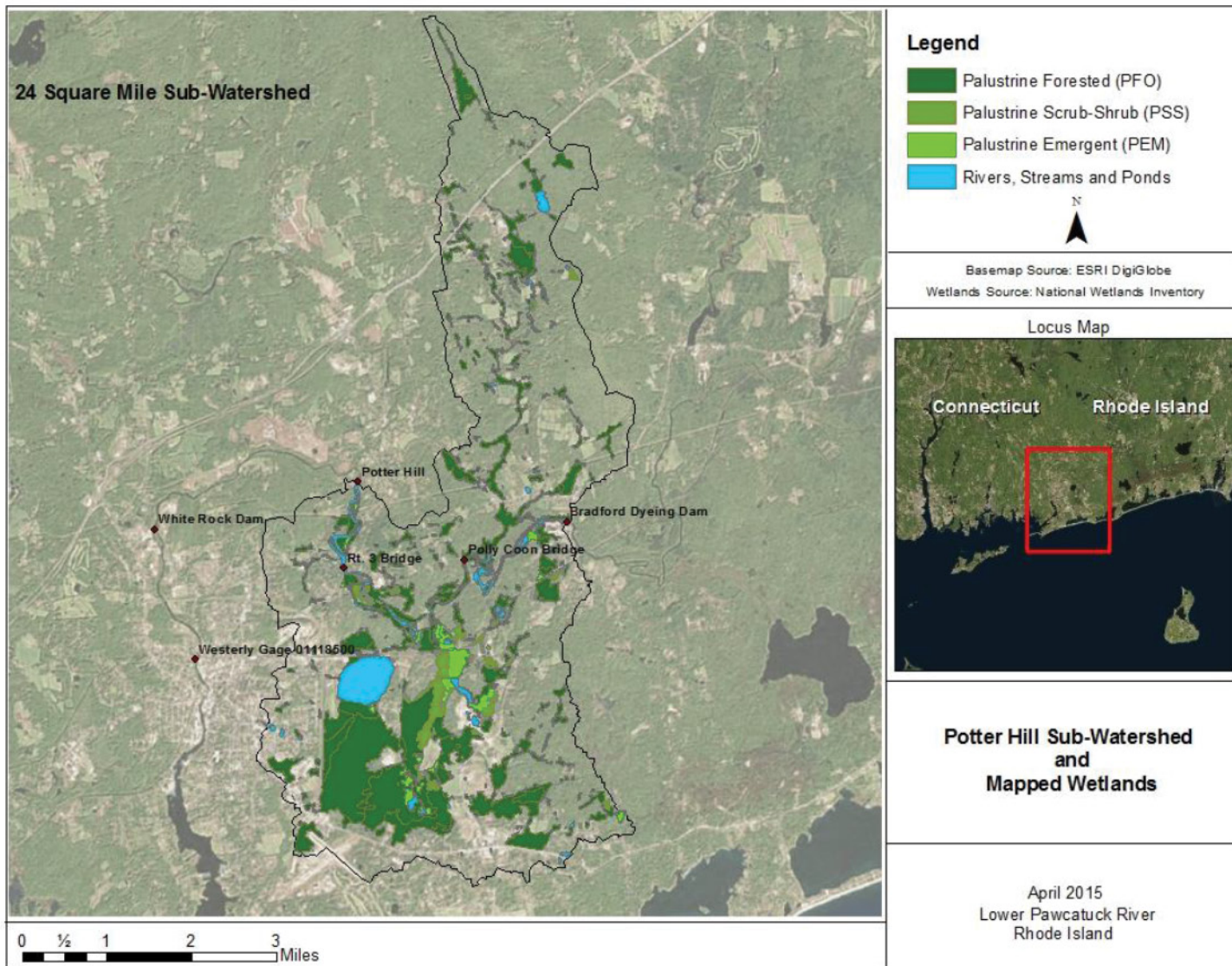
Washington Co. R. I.

Copyright 1914

Westerly Subscribers' Business Directory

- 1. W. C. Adams, Attorney at Law
- 2. W. C. Adams, Attorney at Law
- 3. W. C. Adams, Attorney at Law
- 4. W. C. Adams, Attorney at Law
- 5. W. C. Adams, Attorney at Law
- 6. W. C. Adams, Attorney at Law
- 7. W. C. Adams, Attorney at Law
- 8. W. C. Adams, Attorney at Law
- 9. W. C. Adams, Attorney at Law
- 10. W. C. Adams, Attorney at Law
- 11. W. C. Adams, Attorney at Law
- 12. W. C. Adams, Attorney at Law
- 13. W. C. Adams, Attorney at Law
- 14. W. C. Adams, Attorney at Law
- 15. W. C. Adams, Attorney at Law
- 16. W. C. Adams, Attorney at Law
- 17. W. C. Adams, Attorney at Law
- 18. W. C. Adams, Attorney at Law
- 19. W. C. Adams, Attorney at Law
- 20. W. C. Adams, Attorney at Law

- References**
- 1. W. C. Adams
 - 2. W. C. Adams
 - 3. W. C. Adams
 - 4. W. C. Adams
 - 5. W. C. Adams





White Rock Dam

Horseshoe Dam

Kenyon Dam

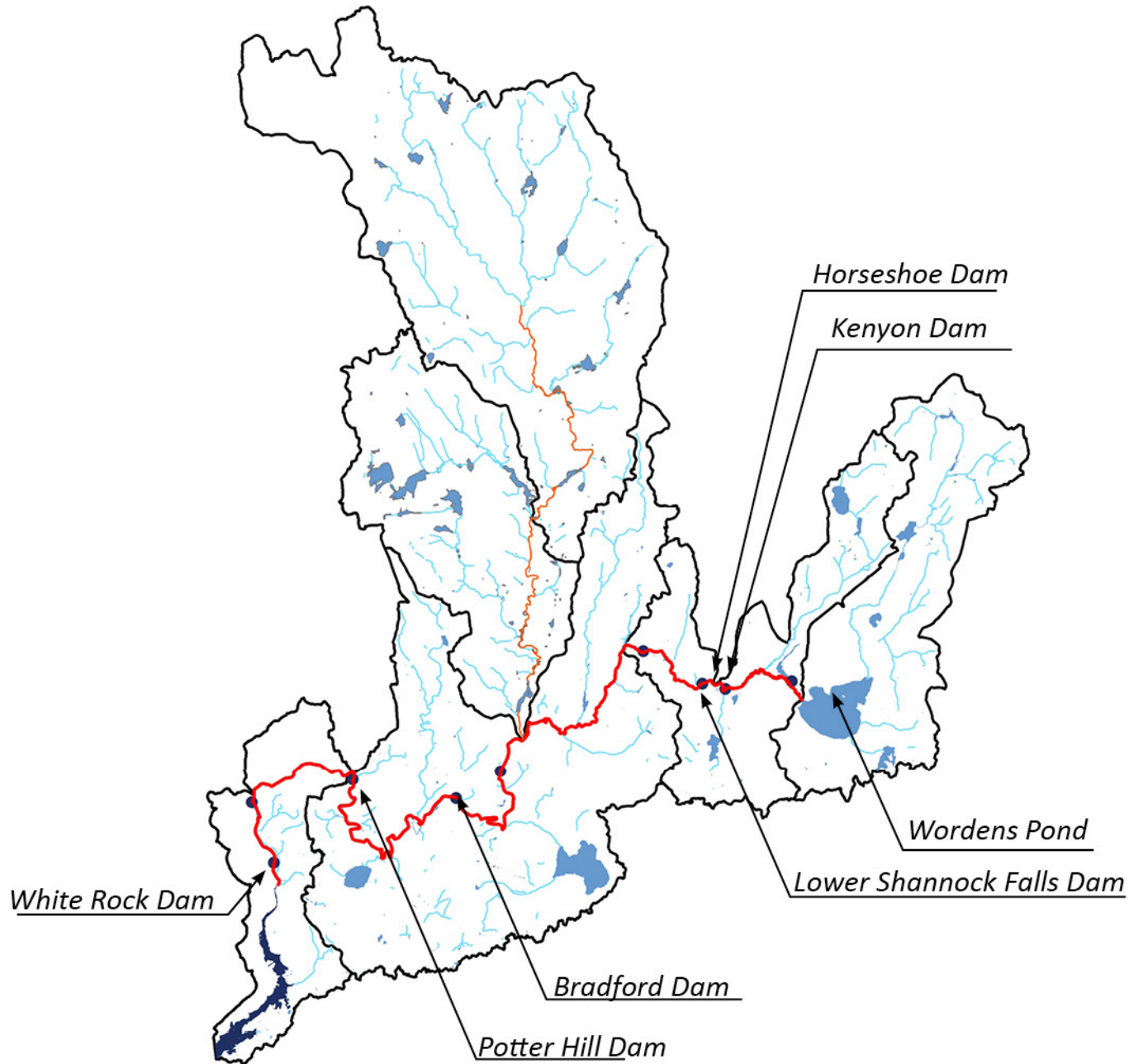
Wordens Pond

Lower Shannock Falls Dam

Bradford Dam

Potter Hill Dam

PAWCATUCK RIVER WATERSHED



White Rock Dam-
Removed

Bradford Mill Dam-
Fish Ladder

Lower Shannock Falls Dam-
Removed

Horseshoe Falls Dam-
Fish Ladder

Kenyon Mill Dam -
Nature Like Fishway

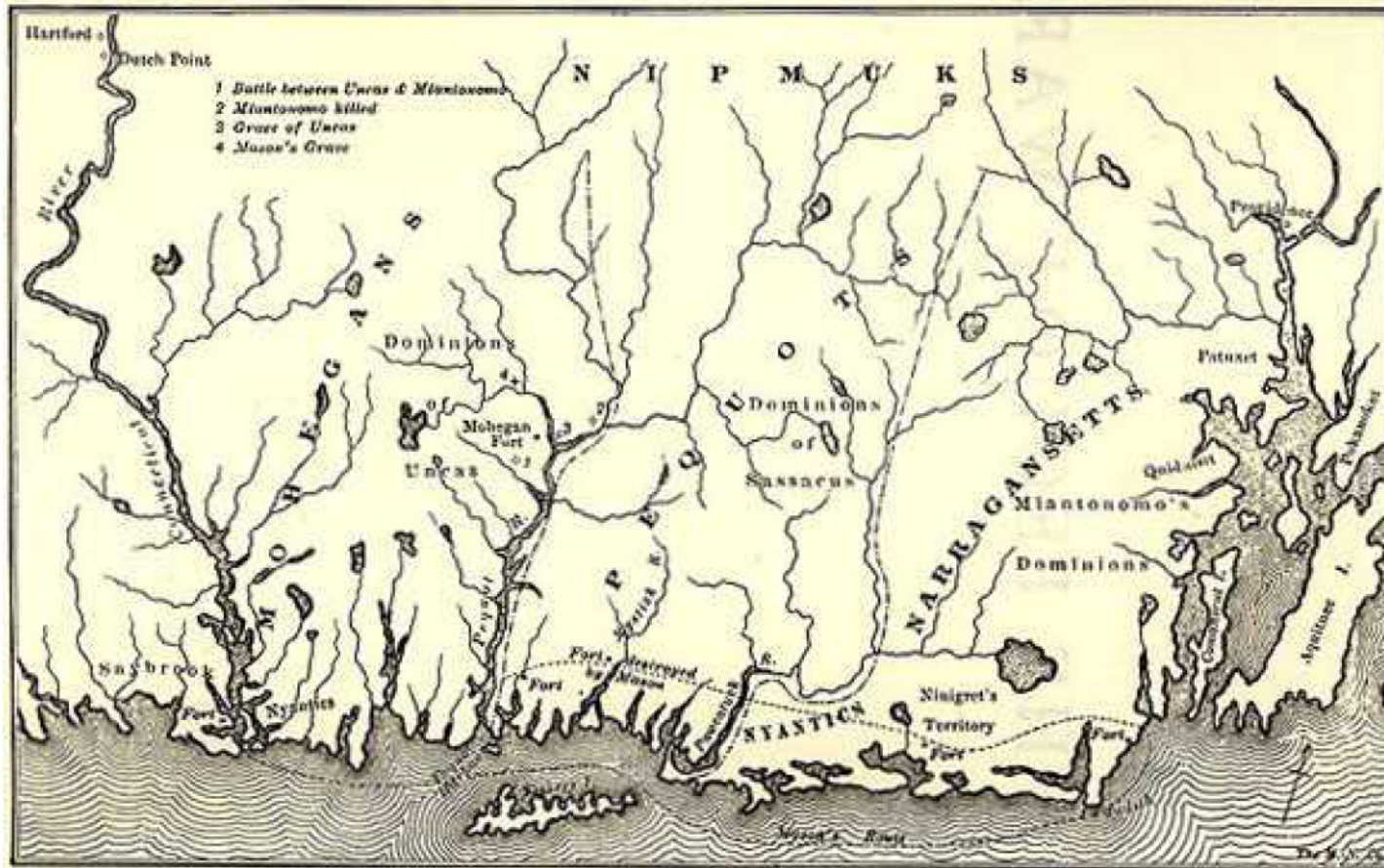


“Although farmers were compensated when mills flooded their land, and fisherman could require that dams be opened at specific times to allow fish to pass up and down stream, the needs of the mill owners soon took precedence over that of the farmers or fisherman” Segar & Saloman, 1980



POTTER'S HILL DAM.—Construction of Dam, showing forms and mixer.

During the 18th, 19th and 20th century industrial revolution led to mills and dams being built throughout the Pawcatuck watershed. The mills and villages began as gristmills, sawmills and then transitioned to the manufacture of wool and cotton textiles. As a result of the dams, the spring runs of fish began to fade.

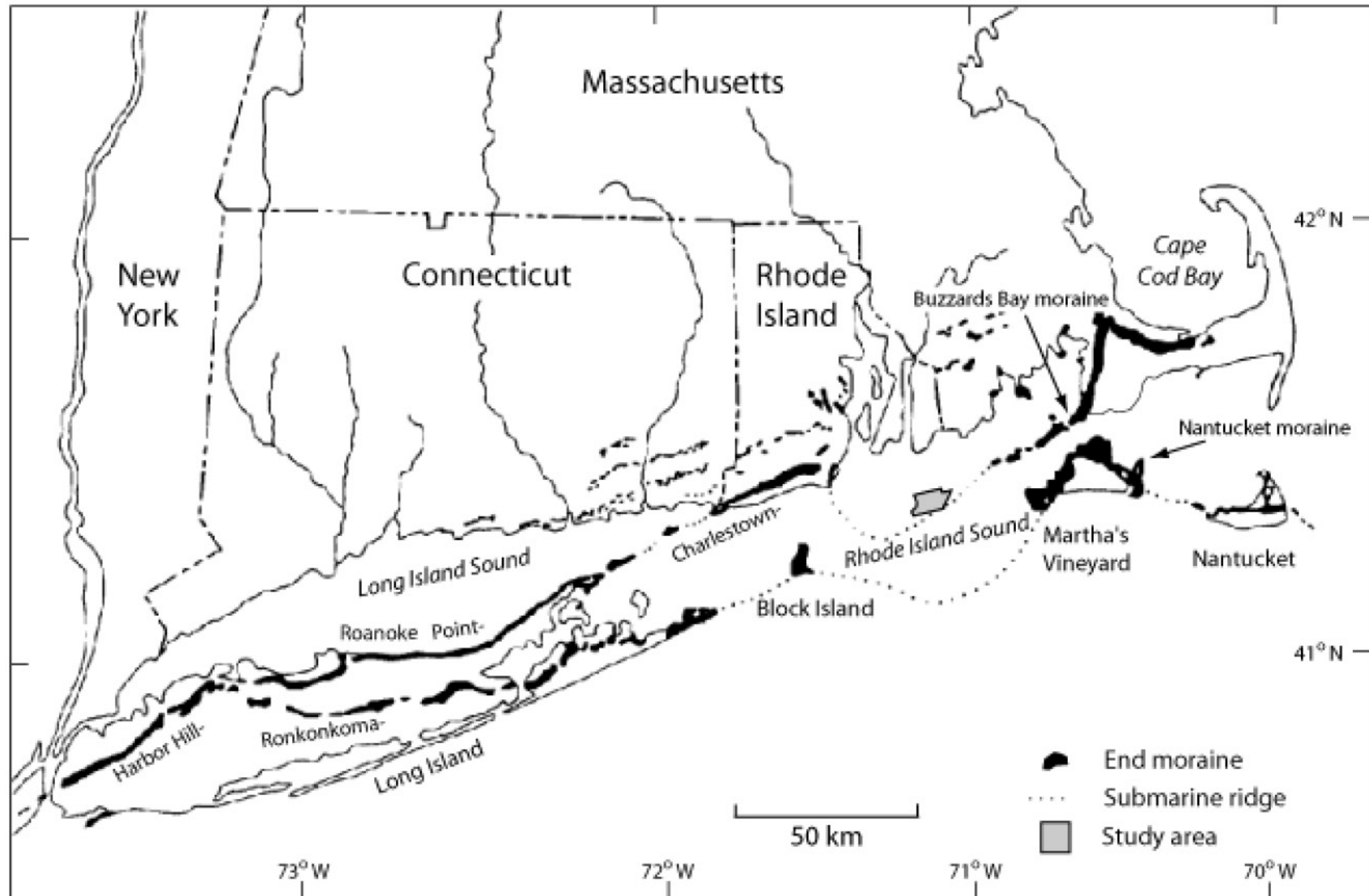


“Shannock falls - here the Narragansett Indians won a fierce battle against the Pequot Indians for possession of the fishing falls. The battle was no doubt over the salmon which were plentiful in the cleat, clean waters.” Stoner



“Most of the sites described herein were not new to human habitation; long before English settlement Indians camped along the rivers, attracted by the spring runs of fish and the hospitable micro-climate of the stream beds” Segar & Saloman, 1980

HISTORY



Because of the Charlestown moraine, which was left behind by the last glacial retreat 10,000 years ago, the Pawcatuck River runs from East to West instead of North to South.

